

CURIUMPHARMA.COM

CURIUM™  
LIFE FORWARD



The world-leader  
in nuclear medicine



## ABOUT CURIUM

Curium is the world's largest nuclear medicine company following the union of two major North American and European suppliers. We develop, manufacture and distribute world-class radiopharmaceutical products to help patients around the globe. Our proven heritage combined with a pioneering approach are the hallmarks to deliver innovation, excellence and unparalleled service.

The name 'Curium' honors the legacy of pioneering radioactive researchers Marie and Pierre Curie, after whom the radioactive element curium was named. The tagline 'Life Forward' represents our commitment to securing a brighter future for all those we serve: An enhanced quality of care for our patients. A trusted partner to our customers. A supportive employer to our valued team.

Since our formation in 2017, we are pleased to report solid financial performance, which in turn supports significant investments to accelerate our growth through new product development and acquisitions. By reinvesting back into our business and products, we remain firmly focused on delivering vital products to over 35,000 patients who are in need of crucial diagnosis and treatment every day. In 2018, Curium became the first to offer 100% LEU generators in North America and has since expanded to supply LEU generators globally. We recently secured a contract supporting Curium's long term molybdenum production. Through acquisition, we expanded our Positron Emission Tomography (PET) network to 26 sites world-wide, executed agreements for the development and distribution of new PET diagnostic agents and added new products to our portfolio. Another key achievement was our CEO, Renaud Dehareng, receiving prestigious recognition as one of USA's top CEOs in 2017 and winning CEO Healthcare Award in 2018.



## Our History

We have been dedicated to serving the Nuclear Medicine industry since the 1960s. This long and proven heritage is something we intend to build upon.

Today, Curium is a world-class provider. It has over 100 years of industry experience and employs over 2,000 people globally. We leverage a deep scientific heritage, combined expertise, size and scale.

## Our Values

Integrity, Commitment, Collaboration: our core values drive every aspect of our behavior. It is our dedication to these values that truly sets us apart from the competition.

We use a two-pronged approach to help get the "job done". This involves team-work and various close internal and external partnerships. We strongly believe everyone deserves respect, dignity, and equality.

## Our Single Focus

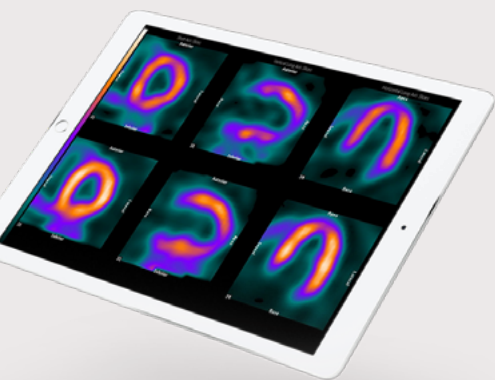
It is one strong, singular focus that unifies our diverse group of industry experts—to develop, manufacture and supply Single-Photon Emission Computed Tomography (SPECT), PET and therapeutic radiopharmaceuticals to customers around the globe.

We are incredibly proud to say that we deliver diagnostic and therapeutic solutions for life-threatening diseases to over 14 million patients a year. It's all part of our mission to give our clinicians superior solutions.

## Our Global Reach

Our vertically integrated radiopharmaceutical manufacturing networks are the largest the industry has to offer. They include: 1 Molybdenum processing facility, 3 large SPECT facilities and 44 PET & SPECT nuclear pharmacies across the United States and Europe.

Our unrivalled logistics and distribution network delivers exceptional service reliability that our customers can count on every day.



# 14m

patients annually

# 6000+

global customers

# 2000

skilled employees

# 60+

countries

# 100+

years experience

# 1

moly processing plant

# 3

manufacturing sites

# 44

nuclear pharmacies

# 50+

products

## Our Products

We pride ourselves on our ability to deliver a steady supply of quality diagnostic and therapy solutions, with the highest standards of quality and safety assured at every stage. We are also committed to the development and launch of many more in the years to come.

Our products include generators, other hot products and cold kits. We also supply auxiliary products to be used in the diagnosis and treatment of various debilitating diseases.

## Our Commitment

It is our exceptional service and industry dedication that enables us to build and foster long-term partnerships with our customers, something we continue to strive for.

We feel it is important to become a trusted partner to our customers—one that is a key contributor to helping patients and supporting future growth. We firmly believe this can only be achieved through the supply of high quality products and services, enabling a better future for all.



**CURIUM GLOBAL  
HEADQUARTERS, LONDON**

100 Pall Mall  
London SW1Y 5NQ  
United Kingdom

**T:** +44 (0)208 051 9289

**E:** [ContactLondonHQ@curiumpharma.com](mailto:ContactLondonHQ@curiumpharma.com)

**W:** [curiumpharma.com](http://curiumpharma.com)



**CURIUM GLOBAL  
HEADQUARTERS, PARIS**

63 Avenue des Champs-Élysées  
75008 Paris  
France

**T:** +33 (0)1 53 57 73 31

**E:** [ContactUs@curiumpharma.com](mailto:ContactUs@curiumpharma.com)

**W:** [curiumpharma.com](http://curiumpharma.com)



**CURIUM NORTH AMERICA  
HEADQUARTERS**

111 West Port Plaza  
Suite 800  
Saint Louis, MO 63146  
United States

**T:** +1 314 384 8009

**E:** [NuclearMedicine@curiumpharma.com](mailto:NuclearMedicine@curiumpharma.com)

**W:** [curiumpharma.com](http://curiumpharma.com)



**FOR ADDITIONAL INFORMATION VISIT OUR WEBSITE  
[WWW.CURIUMPHARMA.COM](http://WWW.CURIUMPHARMA.COM)**